

## **Our Building: Four Seasons with full staffing and great views.**

30 acre plant site within 3.5 miles  
of I-81 and 29.5 miles of I-77

6.7 miles from the New River  
Valley Airport and the U.S.  
Customs office

Plant designed for interactive  
sharing of values among all  
employees

110,000 ft<sup>2</sup> of production space

Graded to allow expansion up to  
250,000 ft<sup>2</sup> of production space

29,000 ft<sup>2</sup> of laboratory, training,  
and office space

1,050 ft<sup>2</sup> climate controlled  
storage room

Men's & women's locker rooms  
with shower facilities

Kitchen and cafeteria area

Handicapped accessible

6 industrial ovens / 1 cooling unit

5 dock doors / 7 bay doors

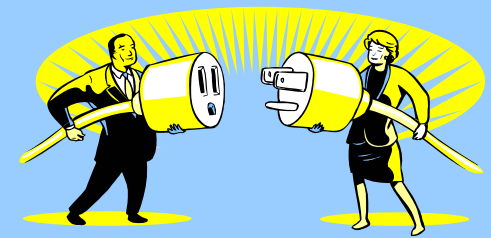
Dust collection and air handling  
systems



## **Recycle Us:**

### **TMD Employees**

**We are your plug and play  
team.**



**Meet your three-shift staff.**



**We are a renewable,  
sustainable, and valuable  
resource.**

## Accomplishments

by

### A workforce united: Common goals Common purposes

Let us use our experience, knowledge, strengths, and work ethics to start and build your business with immediate efficiency.

Since 1995, this team of employees has achieved the following accomplishments:

- First US Friction plant to achieve QS 9000 / ISO 9002 Certification (See video at <http://www.nr.edu/nrcctv/flashVOD/ba.htm>)
- ISO 14001:2004 Certification
- ISO / TS 16949:2002 Certification
- Ford Q1 Supplier Status
- Two-time recipient of the "Supplier of Excellence" award from Advics Manufacturing



## We are:

A team dedicated to stepping up to tomorrow's standards.

Seven of our current employees served as part of the start-up team in the office and in the production areas.

Currently we are:

- 82 Member Production Team
  - 55% trained in Continuous Improvement
  - Average Education Level: 13 years
  - Average Years of Service: 7
- 14 Member Production Support Group
  - 60% trained in Continuous Improvement
  - Average Education Level: 13 years
  - Average Years of Service: 11
- 23 Member Exempt Salaried Staff
  - 87% trained in Continuous Improvement
  - 7 Managers, 16 Support Staff
  - Average Education Level: 15 years
  - Average Years of Service: 7
- Three-shift Operation
- 2008 Average Headcount: 173
- 2008 Absenteeism: 1.7%

**Thirty-eight core employees agree to provide you, as our next employer, your choice of:**

1. Working our first week for free
2. Helping to clean the plant for free
3. Training for you on our own time

**We work hard as individuals but  
best as a team.**

## International Expertise

Our team has worked with customers, suppliers, and coworkers in the following countries: Brazil, Canada, China, the Czech Republic, France, Germany, Italy, Japan, Mexico, Romania, Spain, Sweden, the United Kingdom, and the United States.



**May our workforce  
be with you.**

**New River Valley Economic  
Development Alliance**

7520 Lee Highway

Fairlawn, VA 24141

**Phone:** 540 267-0007

[abopp@nrvaliance.org](mailto:abopp@nrvaliance.org)

For more information:

[www.nrvaliance.org](http://www.nrvaliance.org)